

**AFTER - SERVICE CHECKLIST**



German Cockroach  
Cockroach



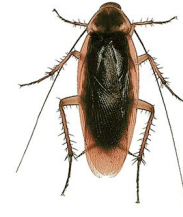
American Cockroach



Smoky Brown Cockroach



Australian Cockroach



Oriental Cockroach



Brown Banded

## Habitat

Cockroaches can be found in premises where food is stored or handled. They spend most of the day hiding in cracks, crevices and heat banks. They are most active at night and if a light is turned on will scamper away to hide. They are often introduced into premises in food and packages from suppliers and feed from the glue that holds the corrugation in these packages.

While cockroaches have not been proven to carry diseases, they can carry organisms that cause human diseases such as food poisoning, dysentery, and salmonella. Allergies are a major problem caused by cockroaches. The allergic response is called an allergen that is ingested with contaminated food or inhaled when dried faecal particles and fragments of ground up bodies of dead cockroaches are mixed together with dust. These allergens can cause severe bronchial problems in sensitive individuals and children.

The female cockroach produces up to eight purse-like egg cases each month. These contain up to 30 eggs and nymphs (young) hatch in 2-4 weeks (6-12 weeks for oriental cockroaches). They nymph looks the same as an adult, only smaller.

## Post Treatment Recommendation

**DO** leave residue in and around cracks, crevices and heat banks for at least 6 weeks  
**DO** discard all gloves, paper towelling and cleaning products  
**DO** wash all clothing that comes in contact with any pesticides

**DO NOT** remove pesticide from areas applied for 6 weeks or unless otherwise instructed  
**DO NOT** water gardens for 24 hours

## Prevention Tips

- Sanitation is a key measure and cannot be overlooked
- Open food should be kept in a refrigerator
- Sweep and mop floors as often as possible to remove a possible food source
- Cover rubbish bins with a tight fitting lid
- Never leave food items in desks, lockers or anywhere exposed to them especially overnight
- Store all food items in air tight containers
- Reduce overall clutter to eliminate shelter options.
- Dirty crockery, cutlery and cooking utensils should be washed and stored away as soon as possible after use
- All goods, especially the cartons and packages should be closely checked for live cockroaches
- Seal doors and windows. Fit mesh on drains and check that there are no gaps around service pipe entry points
- Cracked or loose tiles, laminates, and wall coverings should be re-adhered or replaced.